



Transchill Transmission Cooler Kit for Holden RG Colorado Installation Guide

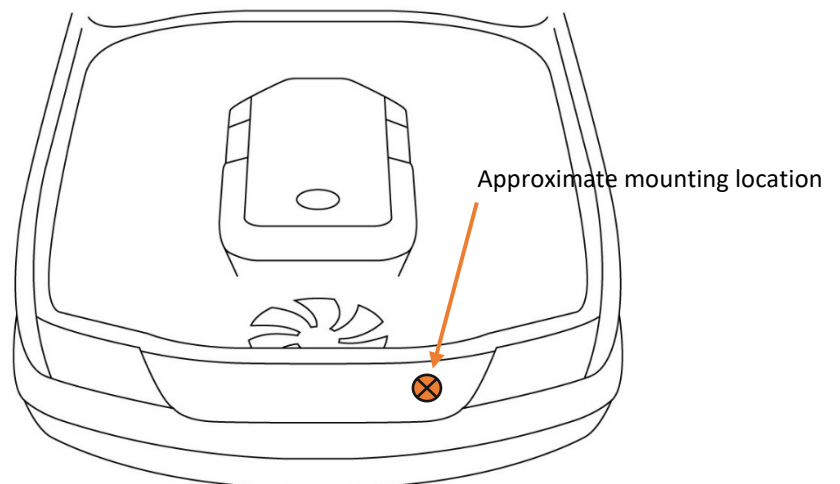
This document is to be used as a guide for the installation of the **Direction-Plus™ Transchill Dual Transmission Cooler Kit to Golden RG Colorado 2.8 diesel with automatic transmission**. It is recommended that the installation of the product be carried out by a competent qualified mechanic.

Important Before Starting

- Ensure you have the correct tools to complete the fitment
- Read the instructions in full and familiarize yourself with the installation, before commencing any work
- Refer to the vehicle owner's manual for the correct transmission fluid for top up
- Kit will suit some aftermarket intercoolers and winches – installers responsibility to verify fitment

Included in the kit

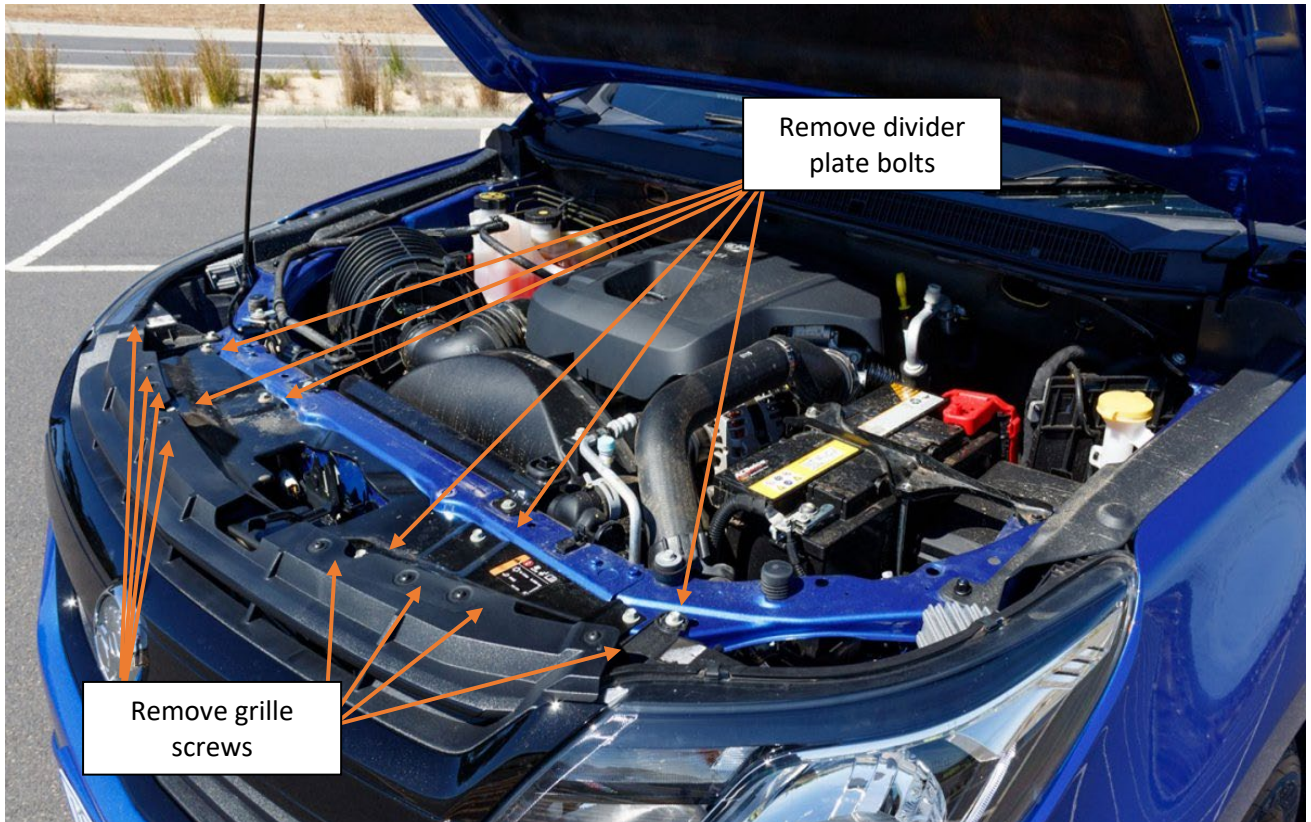
- 2 x Transmission Cooler
- 1 x Upper Mounting Bracket
- 1 x Lower Mounting Bracket
- 1 x 300mm 3/8" Hose
- 1 x 950mm of 3/8" Hose
- 1 x 1100mm of 3/8" Hose
- 6 x 15-17mm Clamps
- 8 x Cable Ties
- 8 x M6x16 Bolts
- 16 x M6 Flat Washers
- 8 x M6 Nyloc Nuts
- 1 x Insulated P Clip
- 3 x Spacers
- 1 x adapter block
- 2 x Straight 10mm barbed fittings



*Kit contents are subject to change based on component availability and/or refinement

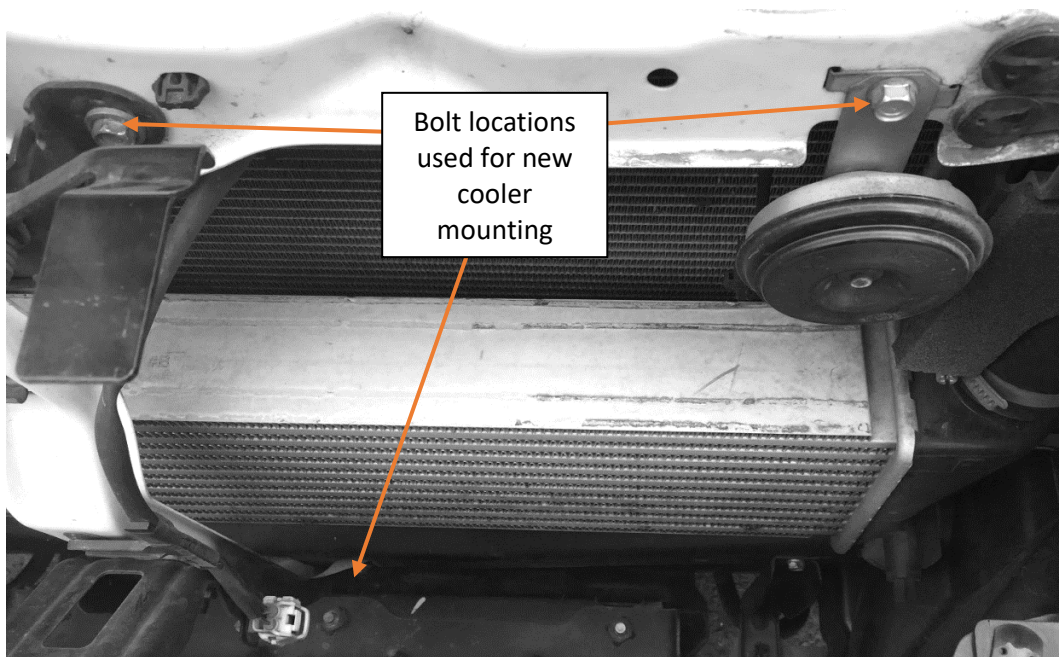
Installation Guide

1. Begin by removing the radiator divider plate. It is held in place by 6bolts and 8screws. Once the bolts and screw are removed remove the divider plate from the car.



Isuzu D-Max Front of Engine Bay/ Grille

2. Remove the four M6 bolts on the passenger side of the vehicle as shown in the next image. These are the new transmission cooler bracket mounting locations.



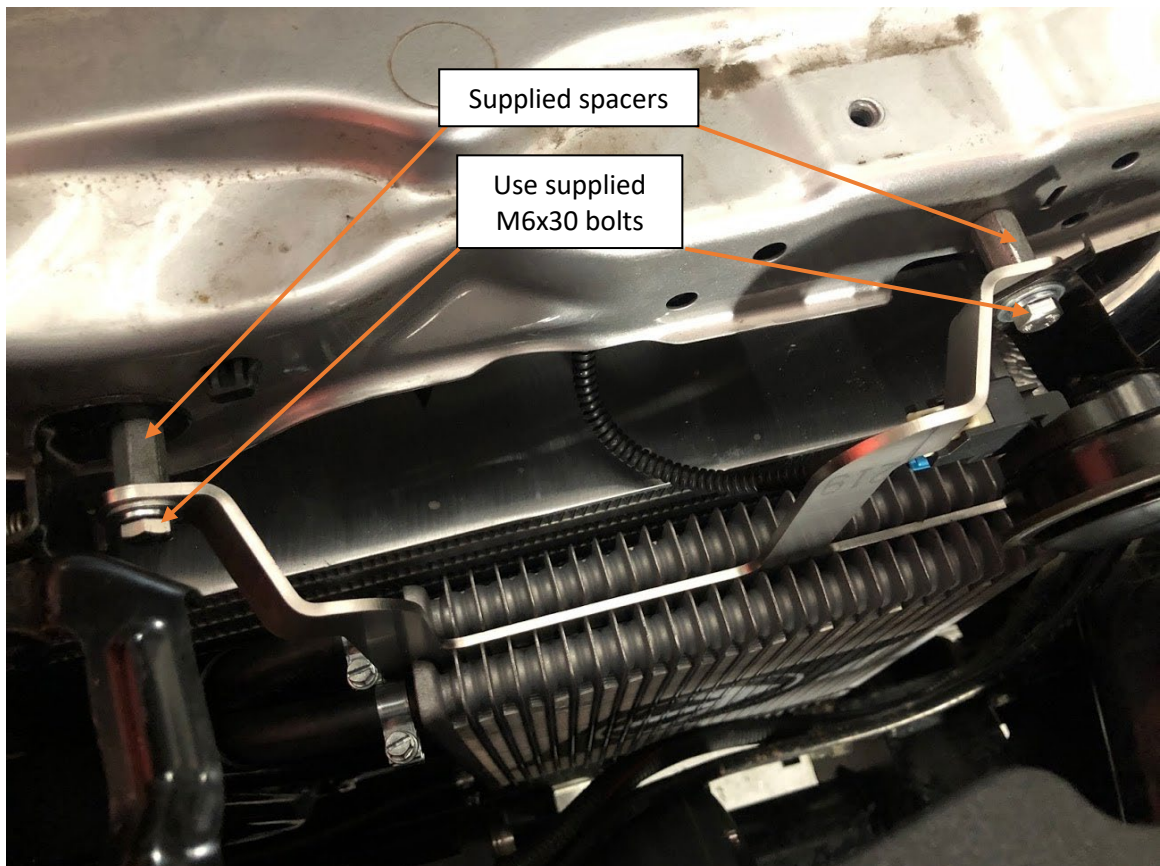
Front grille removed, showing the four mounting locations for the new transmission cooler.

3. Assemble the transmission cooler to the brackets in the kit. The assembly using the 8xM6 bolts, 16xM6 flat washers and 8xM6 nyloc nuts.



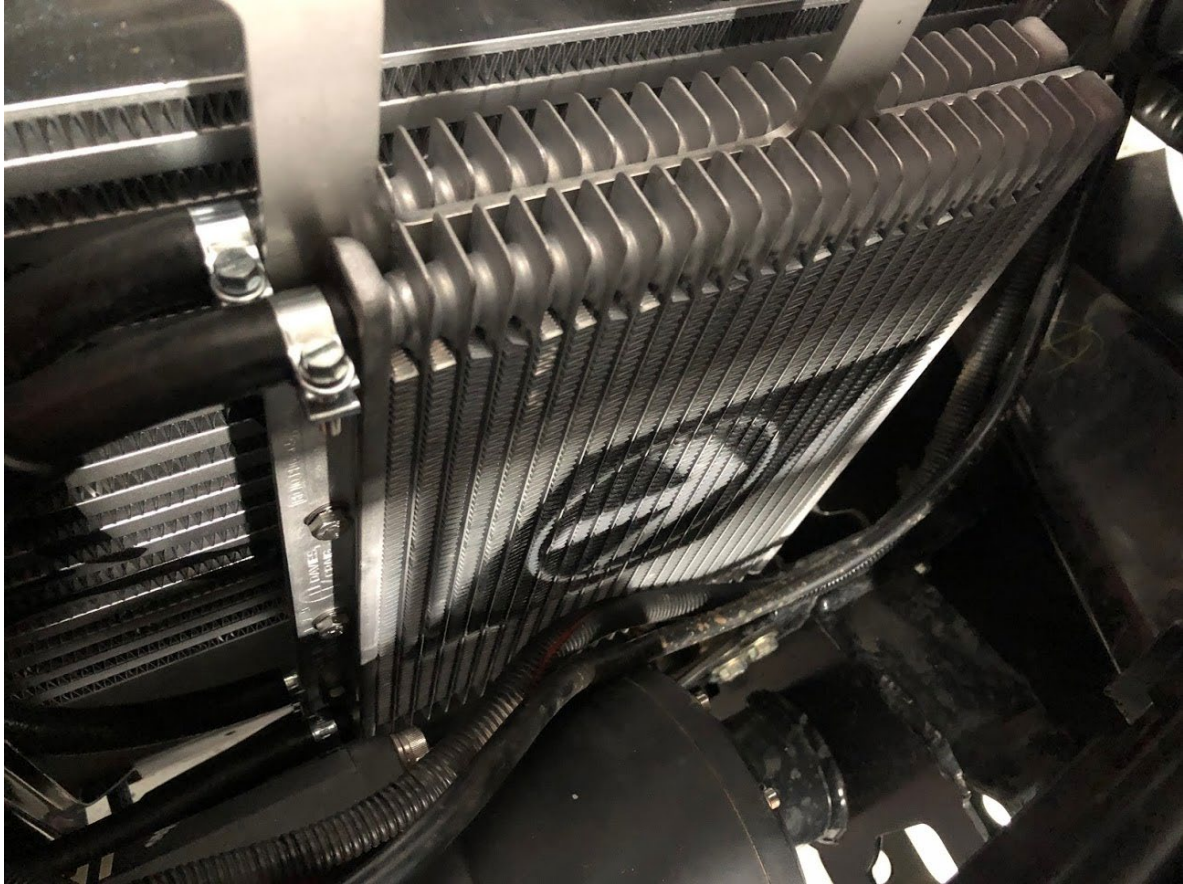
Image shows dual cooler mounting and hose connection

4. Using the 3x spacers and 3x M6x30 bolts, bolt the new transmission cooler and bracket assembly into the vehicle locating the top and bottom of the bracket using the bolt locations that were removed in step 2.



Transmission Cooler Assembly Bolted in Place.

5. Connect the 950mm long hose to the lower port on the transmission cooler, secure in place with a clamp.
6. Connect the 1100mm long hose to the top port on the transmission cooler, secure in place with a clamp.
7. Connect the other end of the 1100mm long hose to the return line port that used to connect to the stock transmission cooler, secure in place with a clamp.



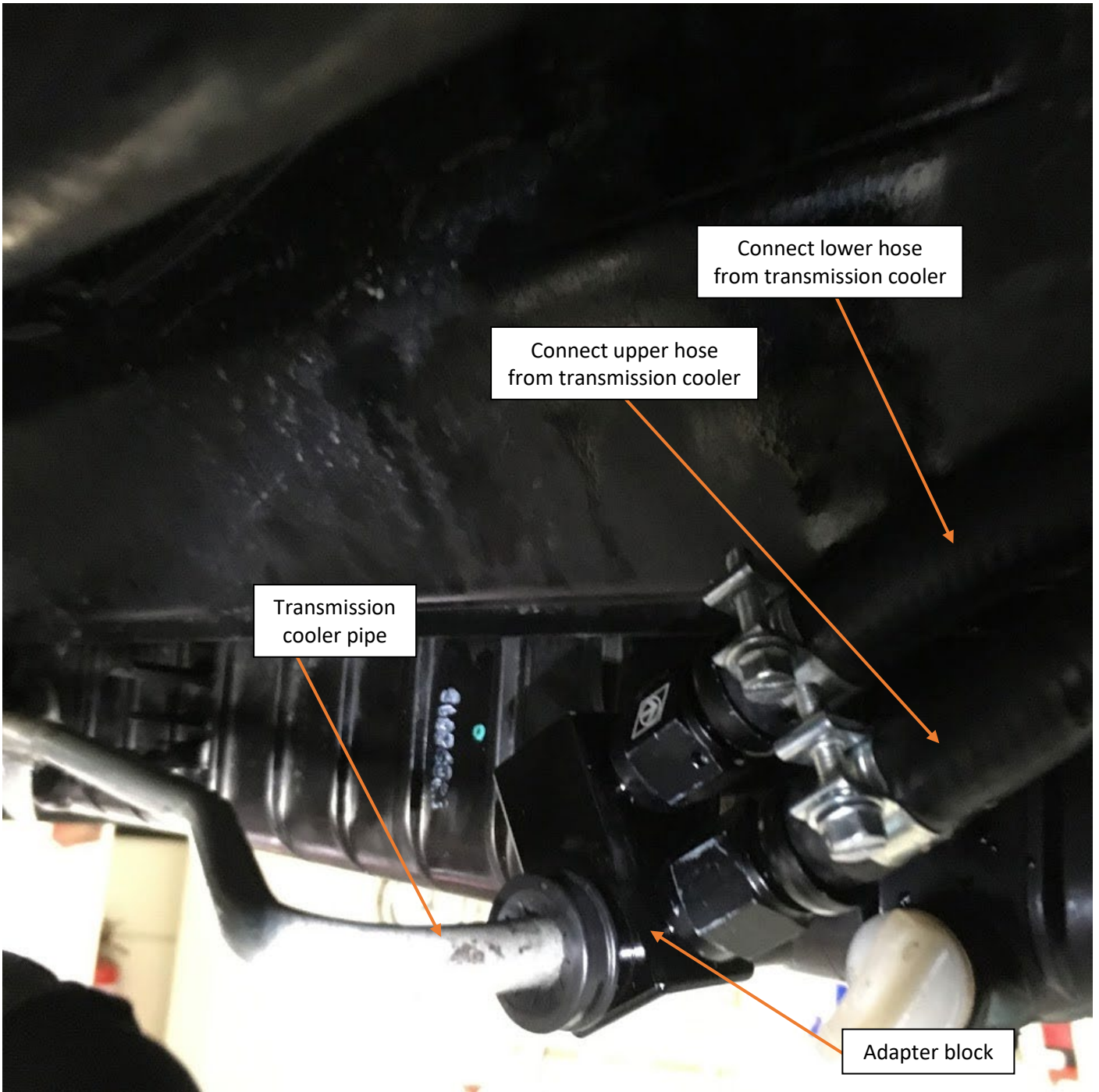
Make sure hose does not rub on center support

8. Use the insulated P Clip to secure the line from the top port of the new transmission cooler, it uses the third M6 bolt down on the side closest to the center of the vehicle.

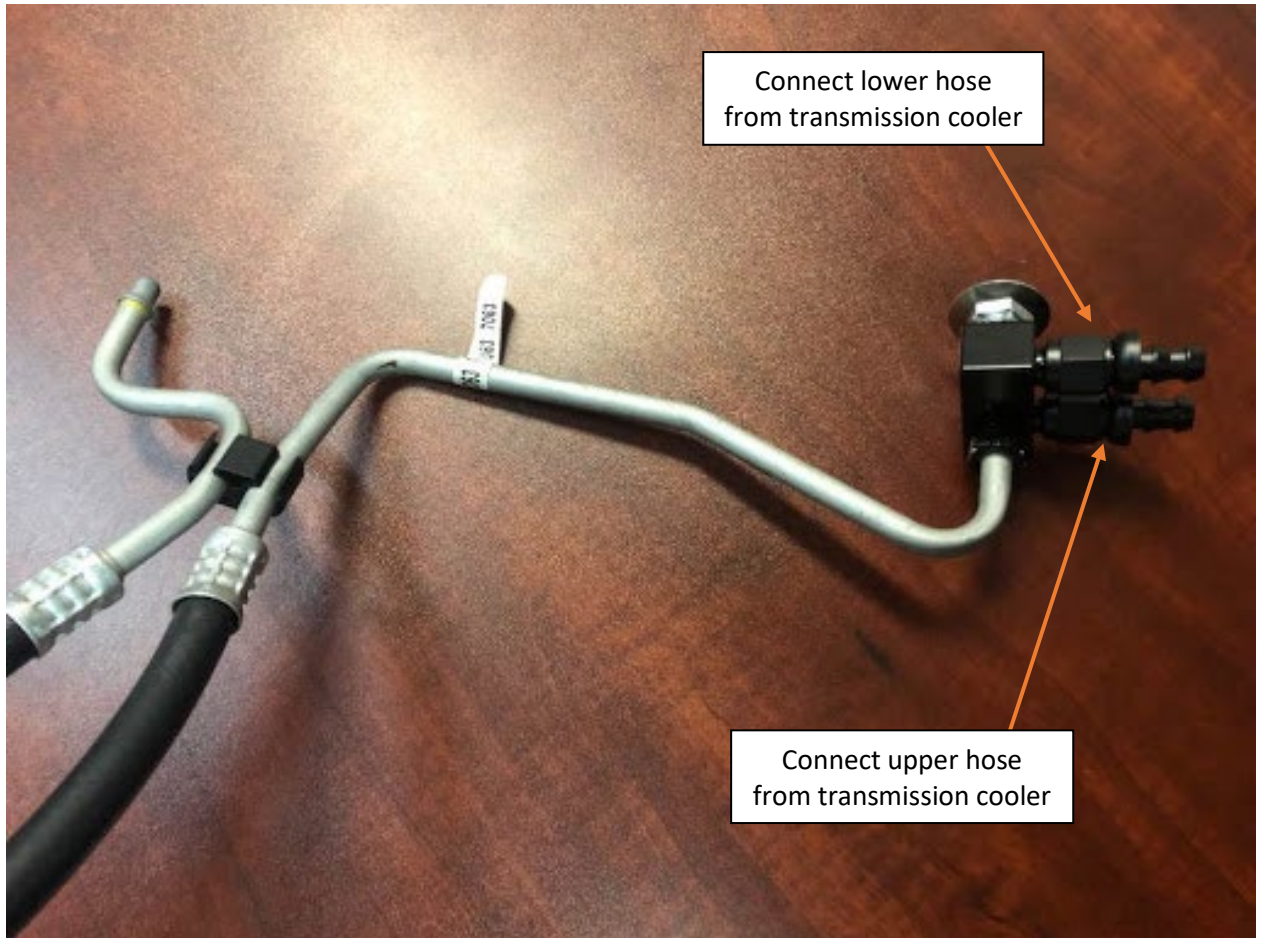


Stock Transmission Cooler in bottom radiator tank. Remove Hose on the passenger side, it is the return hose from the stock cooler to the transmission.

9. Disconnect the drivers side transmission cooler pipe from the bottom of the radiator.
10. Install the supplied adapter block into the radiator where the transmission line was removed.
11. Reinstall the transmission cooler pipe into the adapter block as shown in the image. Make sure that the “C” clips have engaged the barb and cannot be pulled out.



Adapter block installation and connection example.



Adapter block connection example.

12. Install the two straight fittings into the hoses coming from the transmission cooler and secure with the supplied 10mm hose clamps.
13. Connect the hose coming from the bottom of the transmission cooler to the adapter block, install the fitting finger tight.
14. Connect the hose coming from the top of the transmission cooler to the remaining port on the adapter block, finger tight.
15. Adjust the angle of the hoses and tighten both fittings on the adapter block
16. Use cable ties to secure any loose cooler line to prevent rubbing.
17. The cooler itself holds 120mL of fluid, plus 145mL for the hoses, the total amount of 265mL of factory specified ATF Transmission Fluid needs to be added to the transmission.
18. Reinstall the radiator divider plate in reverse as how it was removed in step 1.

End of Installation Guide