

Mitsubishi Triton MQ 2015+ Transmission Cooler Installation Guide

This document is to be used as a guide for the installation of the Direction-Plus™ Triton MQ Transmission Cooler Kit to a 2015+ Mitsubishi Triton MQ 2.4L Diesel with automatic transmission. It is recommended that the installation of the product be carried out by a competent qualified mechanic.

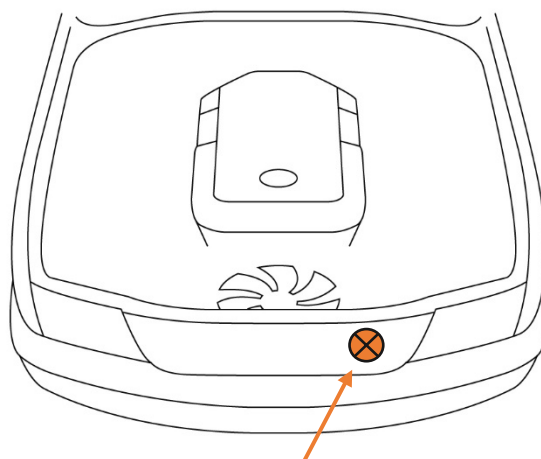
Important before starting

- Ensure the engine bay is clean and free from contaminants
- You have the correct tools to complete the fitment
- Read the instructions in full and familiarize yourself with the installation, before commencing any work

Note: Fitment of the magnefine® element is optional and can be installed in line at any point along the ATF hose. Make sure that attention is paid to the direction of flow.

Included in the kit

- 1 x Transmission Cooler
- 1 x Upper Mounting Bracket
- 1 x Lower Mounting Bracket
- 1x 670mm of 3/8" Hose
- 1x 570mm of 3/8" Hose
- 4 x 15-17mm Clamps
- 8 x Cable Ties
- 3 x M8x16 Bolt
- 3 x M8 Flat Washer
- 3 x M8 Spring Washer
- 9 x M6x16 Bolts
- 18 x M6 Flat Washers
- 9 x M6 Nyloc Nuts
- 1 x Insulated P Clip
- 1 x Magnefine® ATF filter

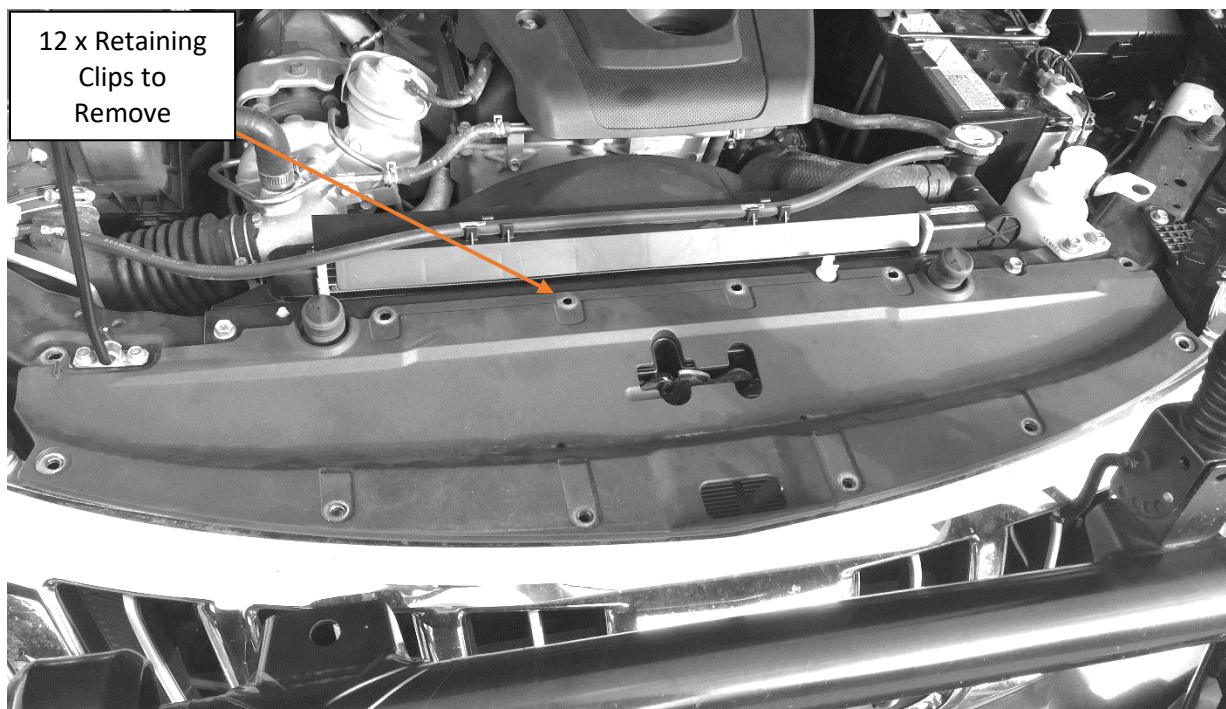


Oil cooler mounting location

*Kit contents are subject to change based on component availability and/or refinement

Installation Guide

1. Begin by removing the radiator trim cover. It is held in place by several clips. Once the clips are removed it just lifts off.

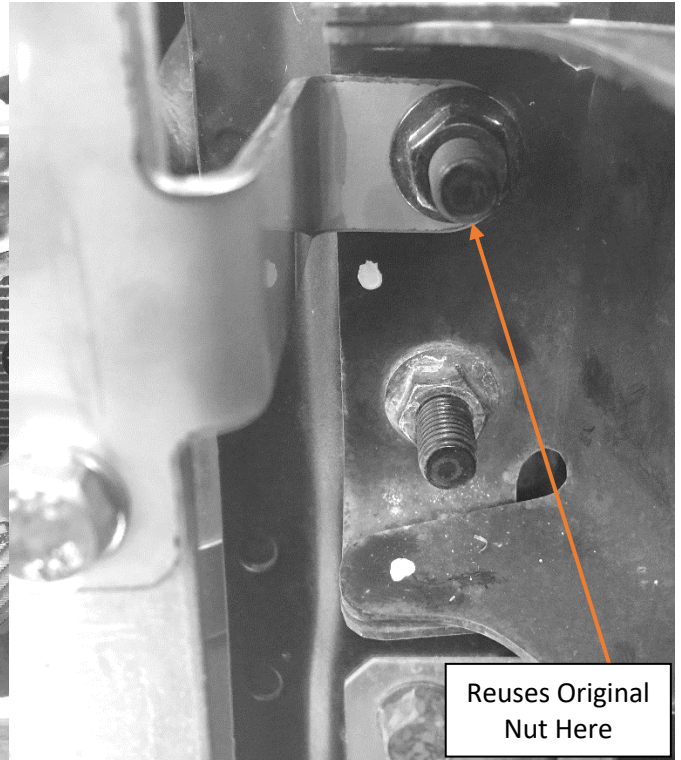
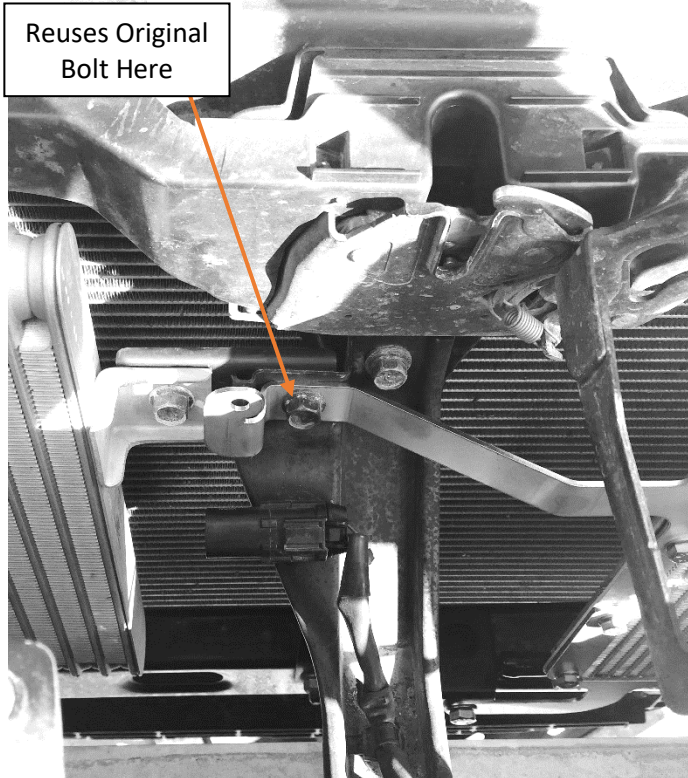


MQ Triton Front of Engine Bay – Clips have already been removed in this image.

2. Remove the top M8 nut on the passenger side of the vehicle. This is one of the new transmission cooler bracket mounting locations. Remove the M8 Bolt just to the right of the stock transmission cooler mount near the center of the vehicle.
3. Assemble the transmission cooler to the brackets in the kit. The assembly will use all 8xM6 bolts, 16xM6 flat washers and 8xM6 nyloc nuts.

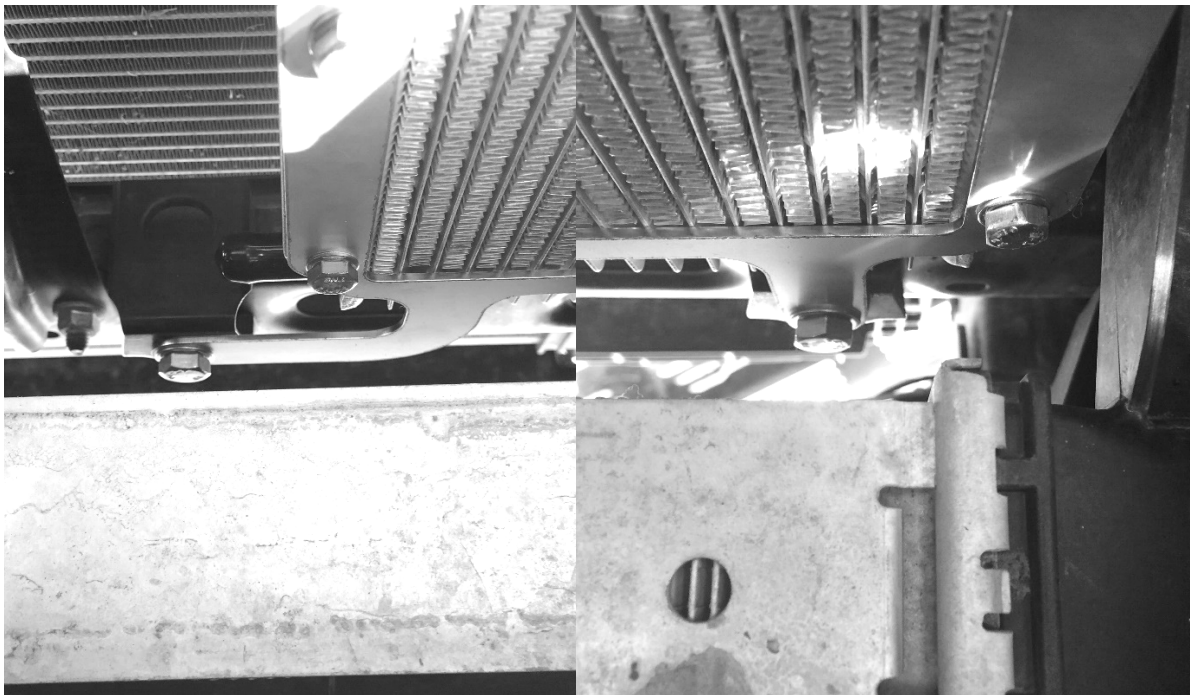


Transmission Cooler Assembly Bolted in Place. Note: Cooler sits on rear face of brackets, with nuts towards the rear, bolts to the front.



Top Center and Top Outer Transmission Cooler Mount

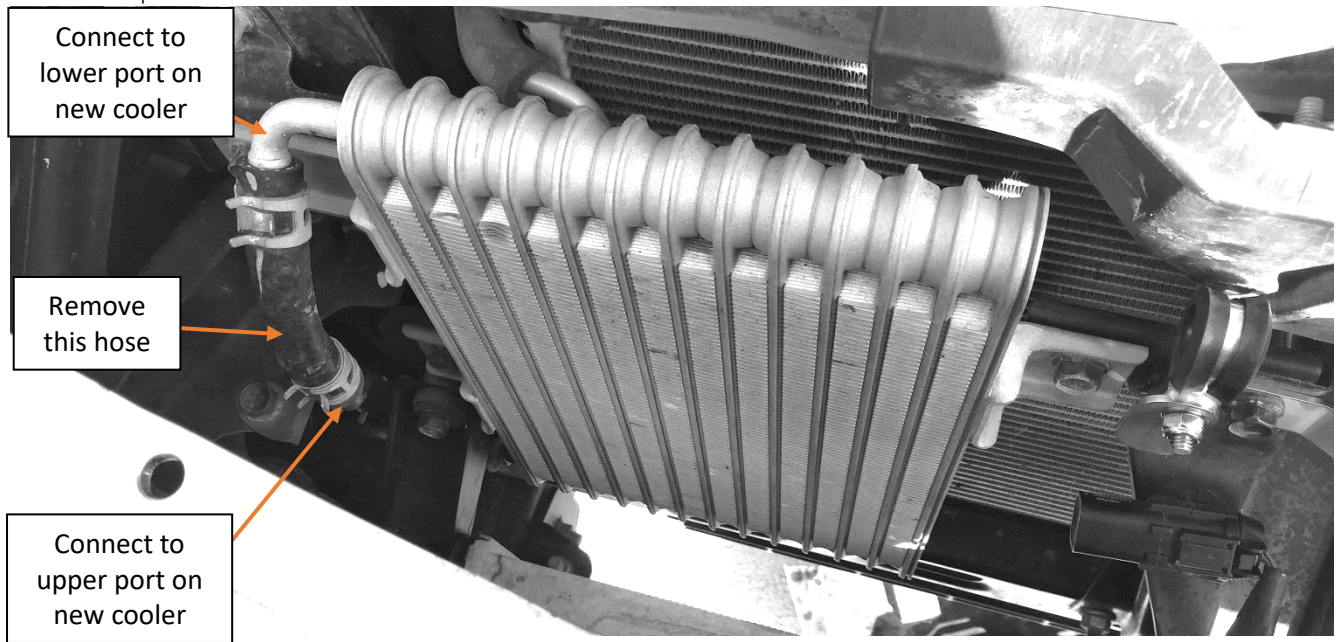
4. Bolt the new transmission cooler and bracket assembly into the vehicle locating the top right corner off the stud the nut and the M8 bolt that were removed in step 2.
5. Use the two M8x16 bolts, flat washers and spring washers to secure the bottom bracket to the two empty threaded holes on the front on the vehicle.



Lower Transmission Cooler Mounts, center on left, outer on right

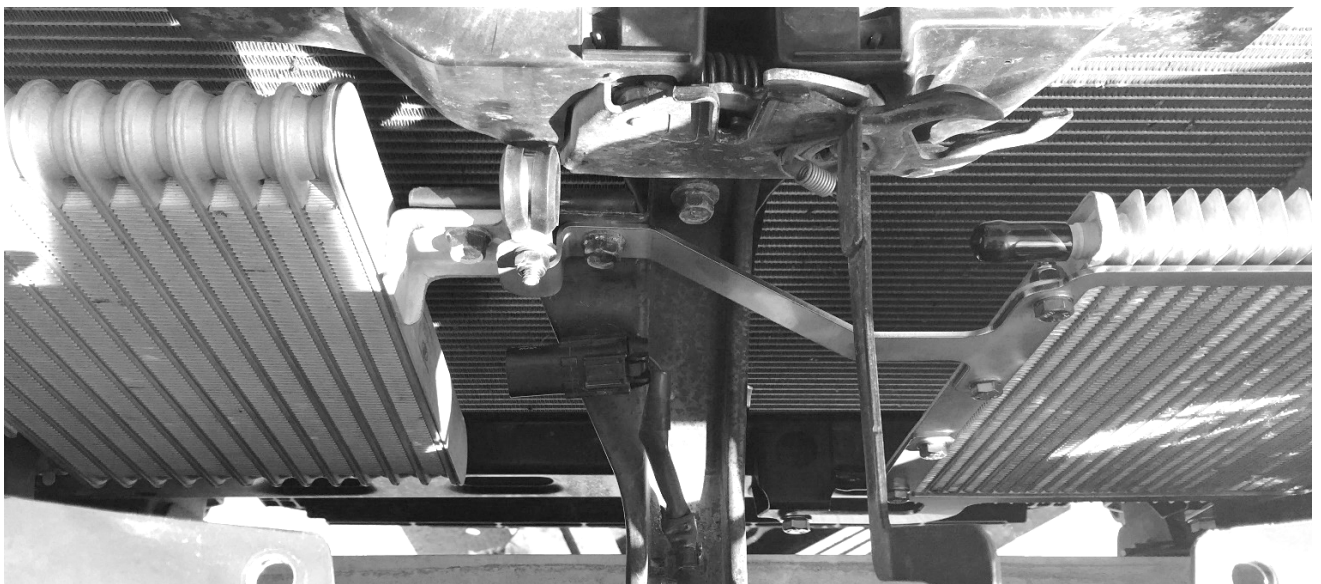
6. Connect the 670mm long hose to the lower port on the transmission cooler, secure in place with a clamp.

7. Connect the other end of the 670mm long hose to the outlet port on the stock transmission cooler, secure in place with a clamp.



Stock Transmission Cooler. Remove Hose on the left.

8. Connect the 570mm long hose to the top port on the transmission cooler, secure in place with a clamp.
9. Connect the other end of the 570mm long hose to the return line port that used to connect to the stock transmission cooler, secure in place with a clamp.



P Clip Bolted in Place, Bolt in place before clamping hose, put a screwdriver or socket extension through the P Clip and rotate to angle the P Clip so hose will run behind stock cooler without touching, then open clamp and attach hose.

10. Use the insulated P Clip to secure the line from the top port of the new transmission cooler, using the last M6 bolt, two flat washers and nyloc nut.
11. Use cable ties to secure any loose cooler line to prevent rubbing.
12. The cooler itself holds 120mL of fluid, plus 88mL for the hoses, the total amount of 208mL Mitsubishi Motors Genuine ATF-PA Transmission Fluid needs to be added to the transmission.
13. Reinstall the radiator cover in reverse as how it was removed in step 1.



[End of Installation Guide](#)