

Isuzu D-Max 2012-2019 Transmission Cooler Installation Guide

This document is to be used as a guide for the installation of the Direction-Plus™ Isuzu D-Max Transmission Cooler Kit to a 2012-2019 Isuzu D-Max 3.0L 4JJ1 Diesel with automatic transmission. It is recommended that the installation of the product be carried out by a competent qualified mechanic.

Important before starting

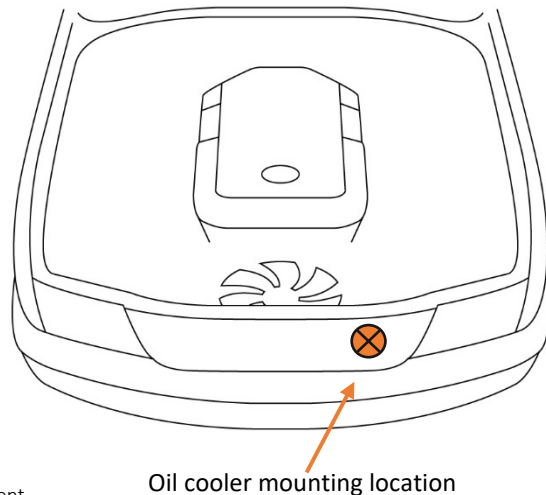
- Ensure the engine bay is clean and free from contaminants
- You have the correct tools to complete the fitment
- Read the instructions in full and familiarize yourself with the installation, before commencing any work

Note: Fitment of the Magnefine® element is optional and can be installed in line at any point along the ATF hose. Make sure that attention is paid to the direction of flow.

Included in the kit

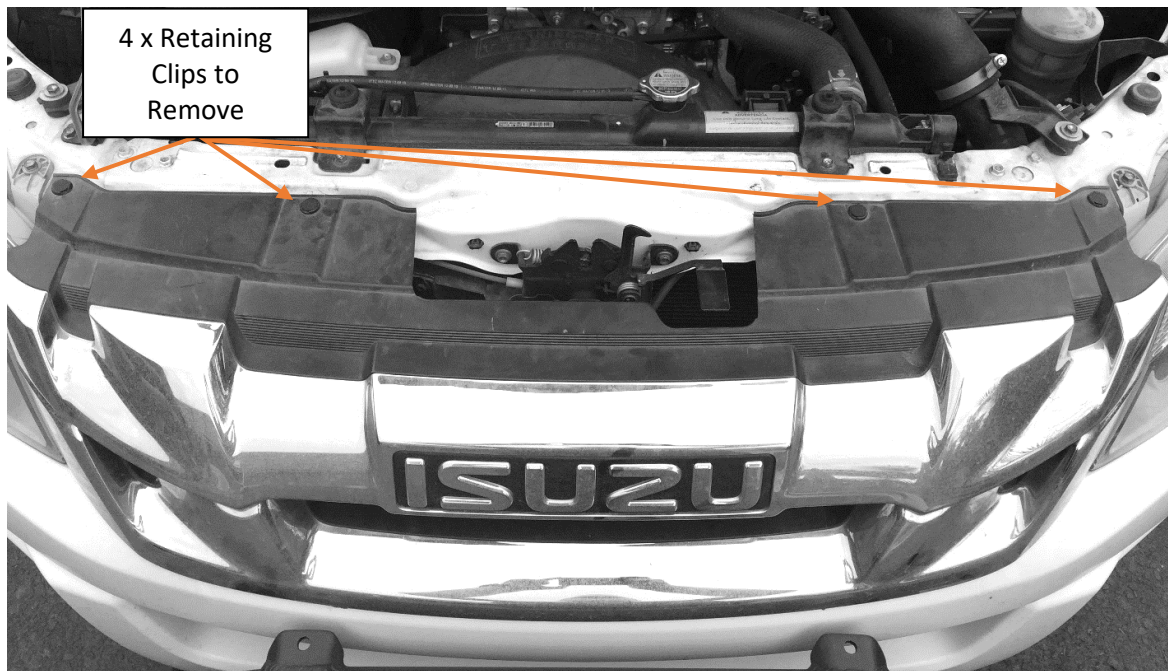
- 1 x Transmission Cooler
- 1 x Upper Mounting Bracket
- 1 x Lower Mounting Bracket
- 1 x 950mm of 3/8" Hose
- 1 x 1100mm of 3/8" Hose
- 6 x 15-17mm Clamps
- 8 x Cable Ties
- 8 x M6x16 Bolts
- 16 x M6 Flat Washers
- 8 x M6 Nyloc Nuts
- 1 x Insulated P Clip
- 1 x Magnefine® ATF filter

*Kit contents are subject to change based on component availability and/or refinement



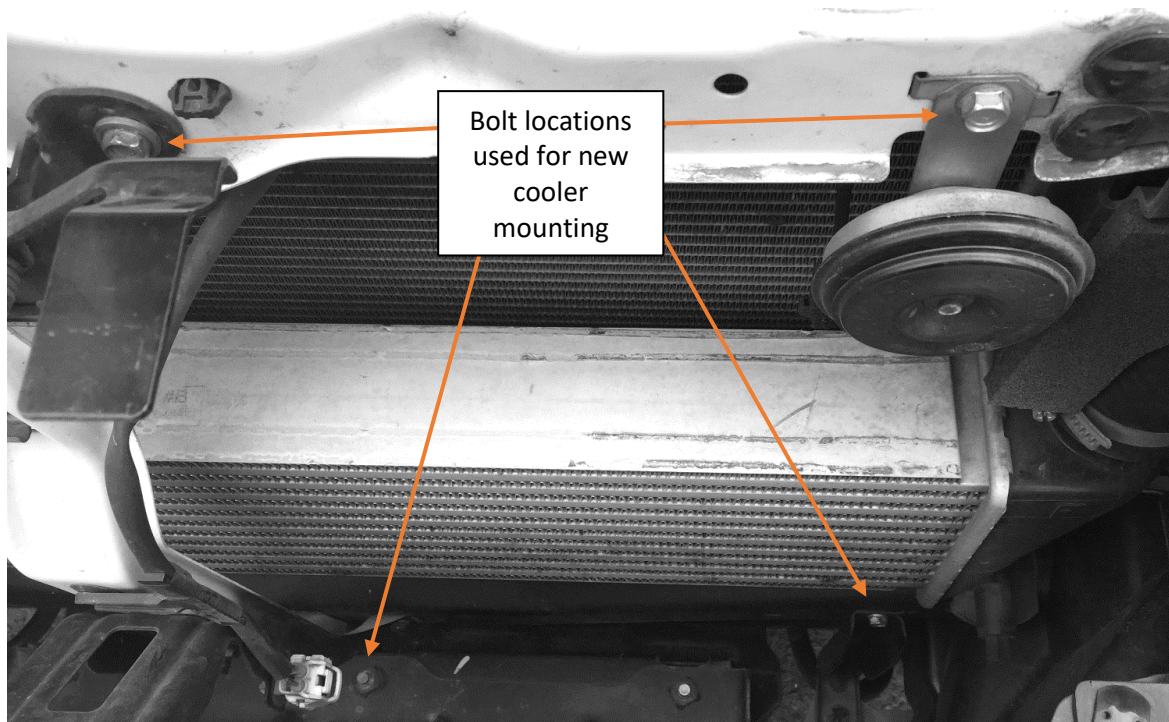
Installation Guide

1. Begin by removing the front grille. It is held in place by 4 clips, a screw in the front center face and two hidden tabs in the bottom corners. Once the clips and screw are removed it pulls forward to unclip from the tabs, please note this can require a fair amount of force to remove, TAKE CARE!



Isuzu D-Max Front of Engine Bay/ Grille

2. Remove the four M6 bolts on the passenger side of the vehicle as shown in the next image. These are the new transmission cooler bracket mounting locations.



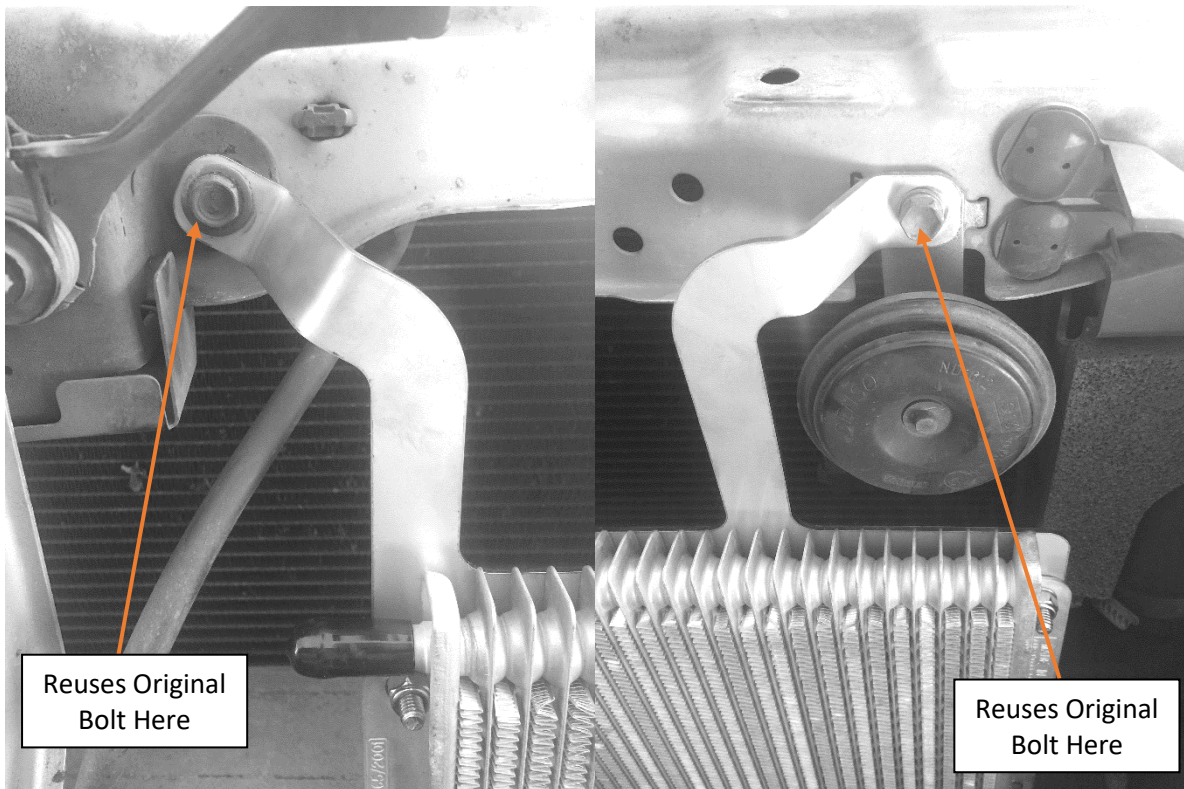
Front grille removed, showing the four mounting locations for the new transmission cooler.



3. Assemble the transmission cooler to the brackets in the kit. The assembly will use all 8xM6 bolts, 16xM6 flat washers and 8xM6 nyloc nuts.

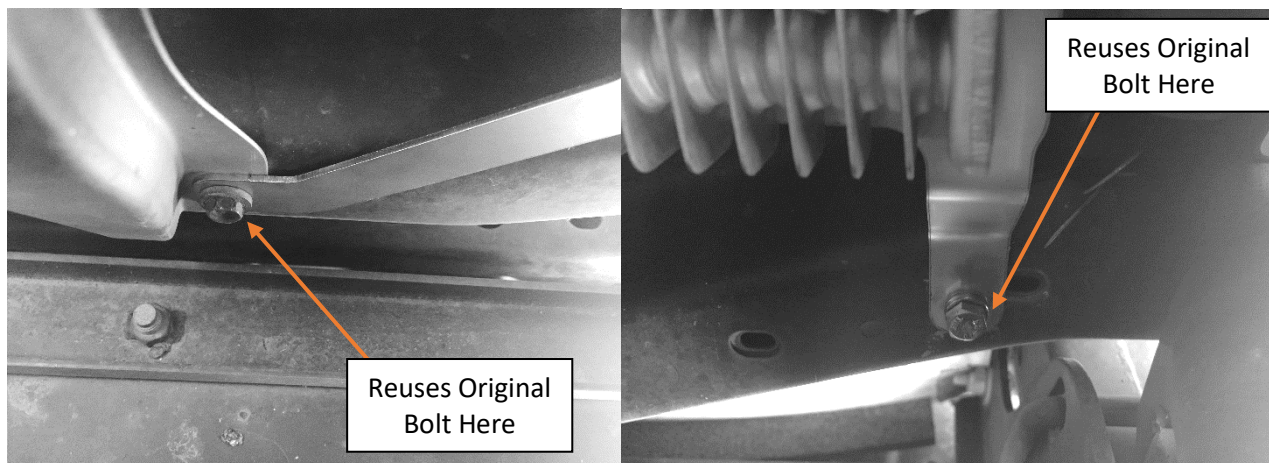


Transmission Cooler Assembly Bolted in Place. Note: Cooler sits on front face of brackets, with nuts towards the front, bolts to the rear.



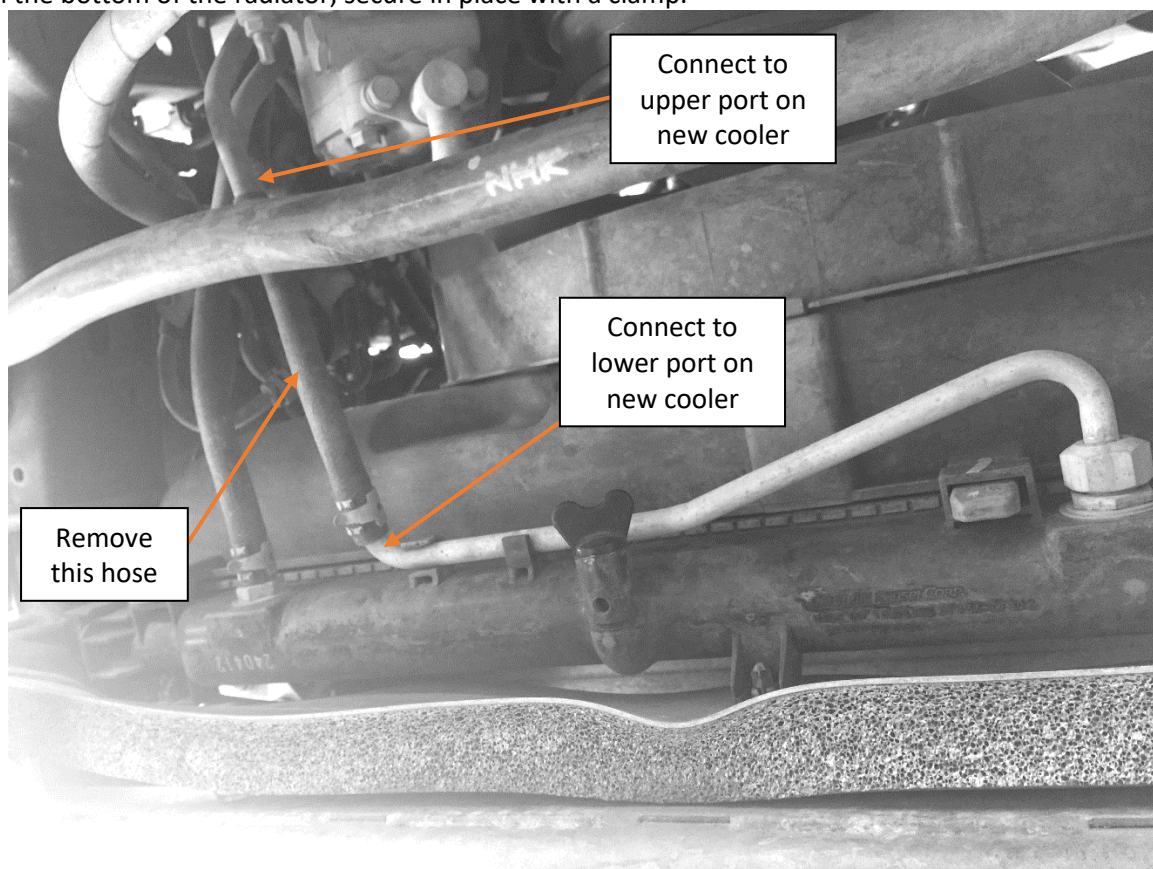
Top Center and Top Outer Transmission Cooler Mount

4. Bolt the new transmission cooler and bracket assembly into the vehicle locating the top off the bolt locations that were removed in step 2.



Lower Transmission Cooler Mounts, center on left, outer on right

5. Connect the 950mm long hose to the lower port on the transmission cooler, secure in place with a clamp.
6. Connect the other end of the 950mm long hose to the outlet port on the stock transmission cooler, located in the bottom of the radiator, secure in place with a clamp.



Stock Transmission Cooler in bottom radiator tank. Remove Hose on the XXX.

7. Connect the 1100mm long hose to the top port on the transmission cooler, secure in place with a clamp.



8. Connect the other end of the 1100mm long hose to the return line port that used to connect to the stock transmission cooler, secure in place with a clamp.



P Clip Bolted in Place. Make sure hose does not rub on center support

9. Use the insulated P Clip to secure the line from the top port of the new transmission cooler, it uses the third M6 bolt down on the side closest to the center of the vehicle.
10. Use cable ties to secure any loose cooler line to prevent rubbing.
11. The cooler itself holds 120mL of fluid, plus 145mL for the hoses, the total amount of 265mL of factory specified ATF Transmission Fluid needs to be added to the transmission.
12. Reinstall the grille in reverse as how it was removed in step 1.

End of Installation Guide